





#### 4 Alston Drive BEROWRA HEIGHTS NSW

4  2  4 

Set in one of the suburbs most outstanding locations this tri-level home has loads to offer. The newly landscaped gardens combine with the superb interiors that go to create a totally beautiful property with both valley and Berowra Waters views.

- Four light and roomy bedrooms with built ins.
- 2 bathrooms including ensuite + a powder room.
- Chefs kitchen, well laid out granite and timber with quality appliances.
- Perfect deck for entertaining overlooking the horizon pool and level lawn area.
- 4th Bedroom suite in-law, separate media / rumpus room.
- Also mezzanine study that overlooks the living area.
- 3 car carport and storage.
- Walking distance to local primary schools, the village shops, and bus to train.

**Building Size** : 27 sqm  
**Land Size** : 1056 sqm  
**View** : <https://www.mcdonaghrealestate.com.au/sale/nsw/hawkesbury/berowra-heights/residential/house/7473738>

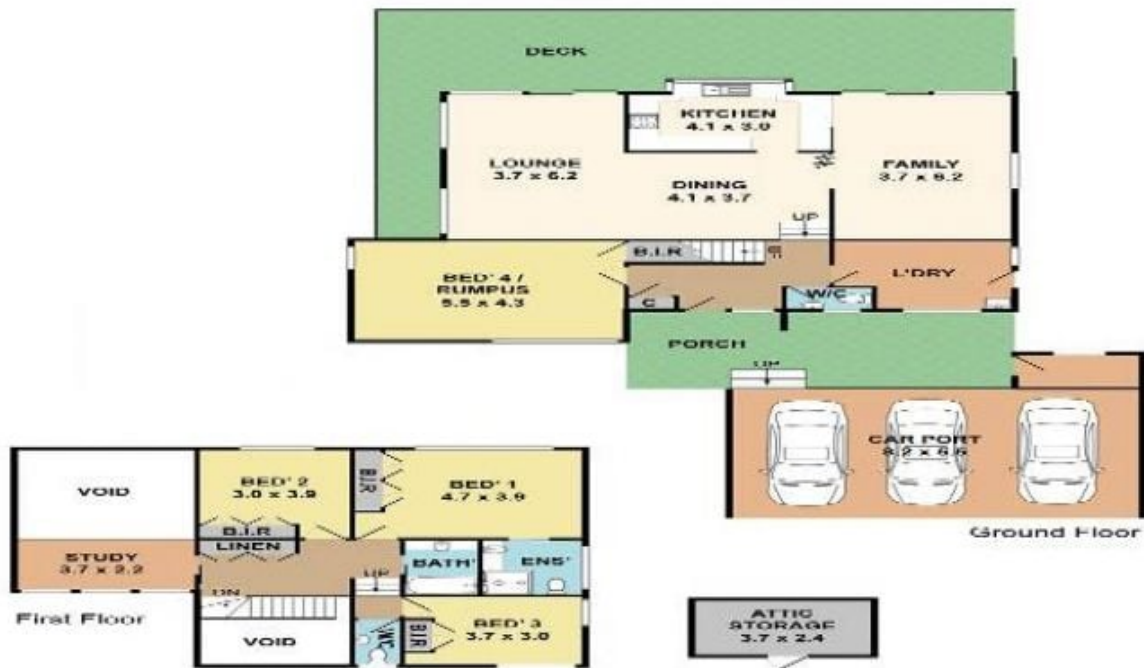


**Peter McDonagh**  
**0410587856**

# 4 Alston Drive, Berowra Hts



Measurements are approximate and not to scale  
Illustration and promotional purposes only  
Typical values are not accepted responsibility for any information supplied



Dec 16

[www.rpdata.com](http://www.rpdata.com)