






72 Yallambee Road BEROWRA NSW

4  1  3 

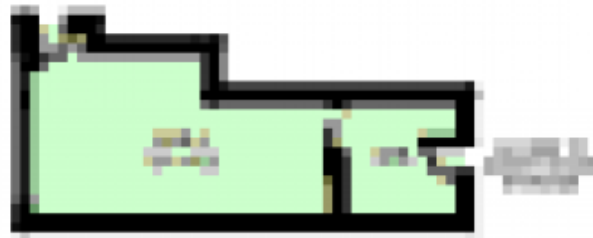
Fantastic modern family living , on over 5,000 square metres of land looking at the picturesque valley scenery. Large wrap around timber deck for easy entertaining, very private living.
A must to inspect.

- Well presented 4 Bedroom home with built ins + study area.
- Tiled foyer with louvered windows for natural cooling.
- Large bathroom with toilet + powder room with second toilet and basin
- Modern open plan kitchen+ island bench with granite tops that has a second sink + gas cooktop, new quality European appliances, timber floors, true north facing to take in all the natural light, walk in pantry to cater for larger

Type : House
Building Size : 27 sqm
Land Size : 5267 sqm
View : <https://www.mcdonaghrealestate.com.au/sale/nsw/north-shore-upper/berowra/residential/house/7473737>

[For full version visit the website](https://www.mcdonaghrealestate.com.au)

72 Yallambee Road, Berowra



0000000000



0000000000

