



26 Lowanna Place HORNSBY NSW

5 3 2

A complete contemporary renovation has transformed this spacious brick home into a designer sanctuary poised to capture sweeping elevated views across Berowra Valley. With 4-5 bedrooms and stylish indoor outdoor living, the home caters perfectly to discerning families. Self-contained accommodation is also featured on the lower level providing scope for rental income. Around 1000sqm occupies a majestic cul de sac setting moments to the centre of Hornsby.

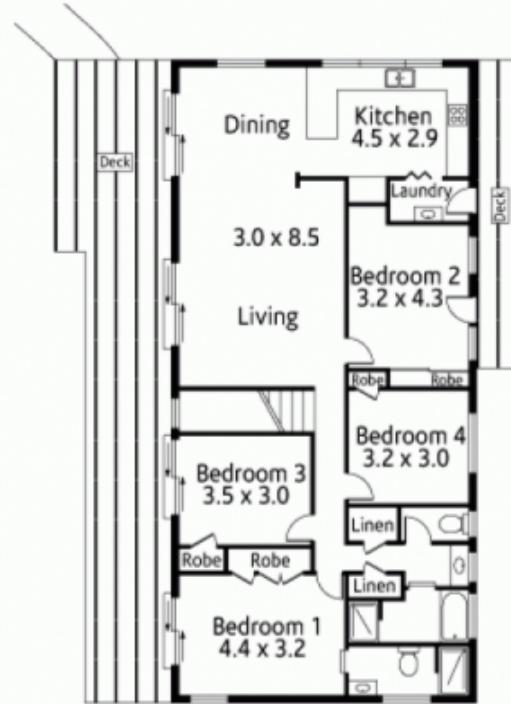
Meticulous attention to every decor detail defines the spacious interior where fresh neutral tones awash with natural light create a bright and breezy ambience throughout. Floating floors grace the main living level across an open plan layout extending to the alfresco

Type : House
Land Size : 1006 sqm
View : <https://www.mcdonaghrealestate.com.au/sale/nsw/north-shore-upper/hornsby/residential/house/7473701>

[For full version visit the website](https://www.mcdonaghrealestate.com.au)



Site Plan



Upper Level



Ground Level

Every effort has been taken to ensure the information in this brochure is accurate to the best of our knowledge, however it is a guide only and no detail should be relied upon. McDonagh Blake accepts no liability for how the information is used.

Council | \$390.00pq

Water | \$172.00pq

Land | 1006sqm

Contract | mcdonaghblake.com

mcdonagh blake