



7 Wingarie Place BEROWRA HEIGHTS NSW

3 1 1

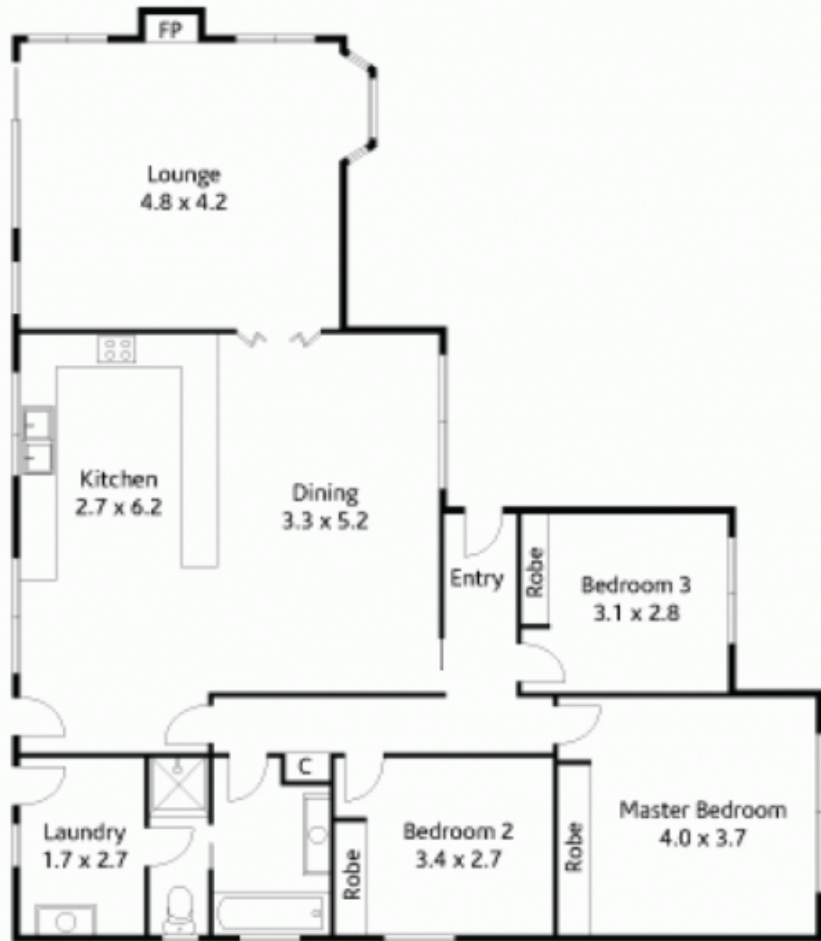
Charming three bedroom family home occupies just over 750sqm on a hushed leafy cul de sac - moments to every Berowra amenity. Front lawn positions the home off the road, and a superb north facing position floods well kept interiors with plenty of light through large timber windows.

A carpeted interior introduces two bedrooms to the left and spacious dining on the right. All bedrooms, including the substantial master, contain mirrored built-ins, ceiling fans and tranquil outlooks. Continue to third bedroom and the pristine bathroom, featuring floor to ceiling wall tiles.

Dining flows either to the kitchen, or to the vibrant living area with bay windows overlooking the front garden, and timber sliders flow to the rear deck. The exposed brick wall

Type : House
Land Size : 751 sqm
View : <https://www.mcdonaghrealestate.com.au/sale/nsw/hawkesbury/berowra-heights/residential/house/7473578>

[For full version visit the website](https://www.mcdonaghrealestate.com.au)



Site Plan